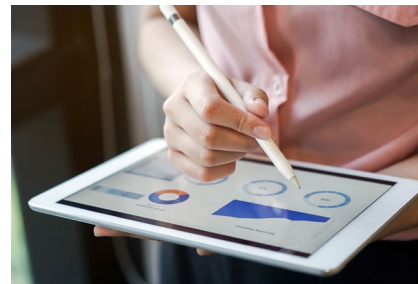


Savings Calculator

Supplier data checklist

Order to cash EDI savings



The **GS1 Australia Savings Calculator** is a tool to assist companies identify potential savings through implementing GS1 standards.

Use this checklist to collect information to generate your Savings Calculator report.

Ordering process

The implementation of electronic purchase orders will greatly reduce your order processing time, compared to manual ordering.

| | | |
|---|--|--|
| 1 | Number of normal orders you typically receive per year | |
| 2 | Percentage of these orders that are disputed | |
| 3 | Number of emergency/non-scheduled orders you typically receive per year | |
| 4 | Percentage of orders you think you will receive using electronic messaging (EDI) | |

Delivery shipping process

Delivery processing time is greatly reduced when the Advanced Shipping Notice (ASN)/Despatch Advices are sent prior to shipping.

| | | |
|---|---|--|
| 1 | Number of normal deliveries you typically ship per year | |
| 2 | Percentage of these deliveries that are disputed | |
| 3 | Number of emergency/non-scheduled deliveries you typically ship per year | |
| 4 | Percentage of deliveries you will ship with an electronic Advanced Shipping Notice/Despatch Advice (ASN/DESADV) | |

Delivery confirmation process

Electronic confirmations enable reaffirming of electronic orders for customers including details regarding the availability of stock, along with related purchasing and delivery information. With electronic confirmations you can improve customer service through efficient order management.

| | | |
|---|---|--|
| 1 | Number of normal deliveries you typically ship per year | |
| 2 | Percentage of these deliveries that included discrepancies | |
| 3 | Percentage of delivery confirmations you think you will receive via electronic proof of delivery (ePOD) | |

Invoicing process

Electronic invoicing eliminates invoice errors, reduces supplier inquiries, improves compliance, and achieves new levels of invoice processing performance through lowering costs and improved productivity.

| | | |
|---|--|--|
| 1 | Number of invoices you typically issue per year | |
| 2 | Percentage of these invoices that are disputed | |
| 3 | Percentage of invoices you anticipate sending via electronic messaging | |

Cash-inflow process

Electronic invoicing can improve your cash flow through prompt and accurate issuing of invoices. The accuracy of your invoices is likely to increase as you use more accurate data. Depending on the processes deployed, this is called 2-way, 3-way or 4-way matching. Complete the following table to understand how much your cash flow will improve.

| | | |
|---|--|--|
| 1 | Average value of each invoice you send | |
| | The total of the following 4 entries must not exceed 100% | |
| 2 | Percentage of invoices issued manually | |
| 3 | Percentage of invoices issued electronically based on the original sales order data | |
| 4 | Percentage of invoices issued electronically based on the Advance Shipping (ASN) or Despatch Advice (DESADV) | |
| 5 | Percentage of invoices issued electronically based on the electronic Proof of Delivery (ePOD) | |

GS1 Australia

Head Office, 8 Nexus Court, Mulgrave VIC 3170

Locked Bag 2, Mt Waverley VIC 3149

T 1300 227 263 | **F** +61 3 9558 9551 | **ABN** 67 005 529 920

www.gs1au.org

CONNECT WITH US



GS1 is a registered trademark of GS1 AISBL.
2693_1019